

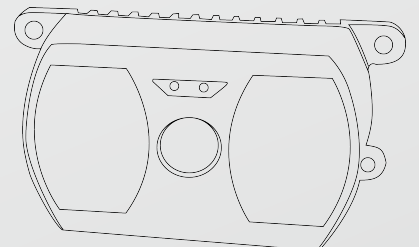


GENIUS PROS
DEPTH AND MORE

NEXT GENERATION SOLID-STATE LIDAR SENSOR

GENIUS **WIDE** - SERIES

THE **WIDER** THE SAFER



www.genius-pros.com

Information

PARAMETERS	VALUE
Sensor	
Type of sensor	CCD
Maximum frame rate	20~25 fps
Pixel array size	640(h) x 60 (v)
Multi camera option	Yes
External light disturbance	Up to 100 KLux
Illumination	
Wave length	850nm
Optics	
Field of view (h) x (v)	90°X20°
Measurement range	0.2-4m
Accuracy	
Absolute accuracy	±4cm
Reapeatable accuracy	1%
Software	
Dirvers	Linux,Windows 7,8,10
PC API	Open-NI 2.2
Camera Internal API	Open-NI 2.2
Data Output	
Response time	<90ms
Distance data resolution	16bit/pixel 1mm

Extra-large Field Angle

Support Built-in Algorithms

Industrial Design

High Depth Resolution

Output Structured Data

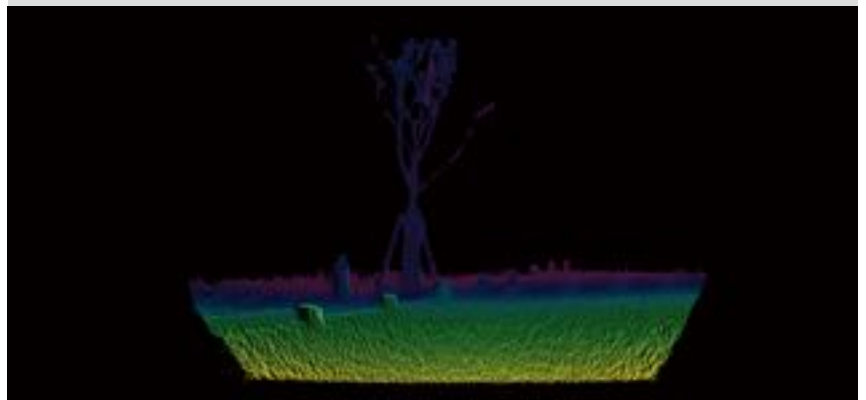
Modular Design, Flexible Customization

PARAMETERS	VALUE
Housing	
Size [height x width x length]	150mm*72mm*45mm
Weight	< 500g
Material	Aluminum
- surface	Hard Anodized Aluminum
- window	Gorilla glass
Environmental	
Ingress protection	IP67
Operating temperature	-10°C...50°C
Storage temperature	-20°C...70°C
Cooling	Passive
Shock and vibration	IEC60068-2-64, IEC68-2-27
Interfaces	
Data interface	Megabit Ethernet
Power socket	DC Jack
Power Supply	
Power Supply	12V DC
Power consumption	<5W
Certification	
Eye safety	Class1,IEC-60825
Electrical certification	CE

ToF WIDE-V2RB61



Model: **WIDE-V2RB61**



US Add: 3350 Scott blvd. Bldg 64 Santa Clara 95054

CN Add: 859 Shixiang West Rd. Building B, Floor 13 Hangzhou, Zhejiang 310030

Tel: +86 (571) 5627 0736



GENIUS PROS