

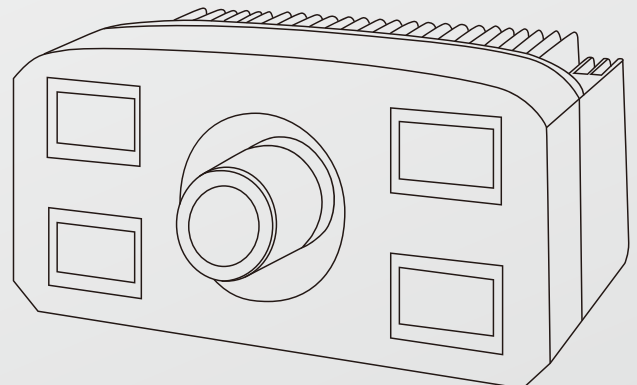


**GENIUS PROS**  
**DEPTH AND MORE**

**NEXT GENERATION SOLID-STATE LIDAR SENSOR**

# GENIUS **ULTRA** - SERIES

FOR MASS PRODUCTION **AUTONOMOUS CAR**



PARAMETERS	VALUE	COMMENTS
<b>Sensor</b>		
Type of sensor	CCD	Camera setting dependent (full frames)
Maximum frame rate	30 fps average up to 120fps	
Pixel array size	768(h) x256 (v)	
Multi camera option	Yes, by factory configuration	
External light disturbance	Up to 100 kLux	
<b>Optics</b>		
Field of view (h) x (v)	70°X40°	
Measurement range	30m @ 10% reflectivity	
<b>Accuracy</b>		
Absolute accuracy	0.5%-1% depend on distance	Reflectivity of target 80%
Repeatable accuracy	1%	
<b>Software</b>		
Dirvers	Linux,Windows 7,8,10	
PC API	Open-NI 2.2	
Camera Internal API	Open-NI 2.2	
<b>Data Output</b>		
Distance data resolution	16bit/pixel 1mm	
<b>Housing</b>		
Size [height x width x length]	60mm*85mm*200mm	
Weight	1.0KG	
Material	Aluminum	
- surface	Hard Anodized Aluminum	
- window	Gorilla glass	

■ Strong Scene Adaptability

■ Strict Vehicle Regulation Design

■ interface diversity

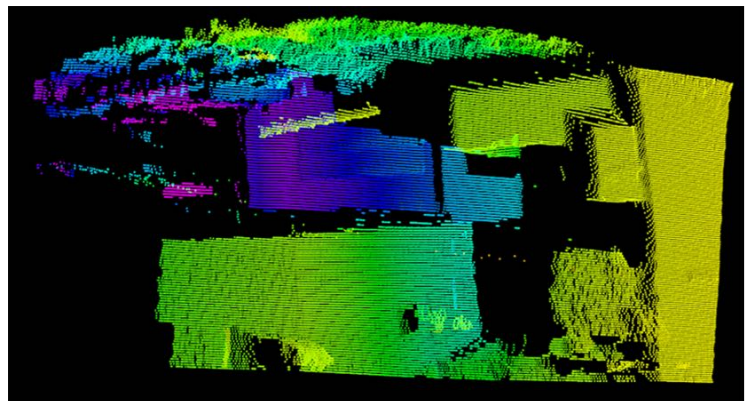
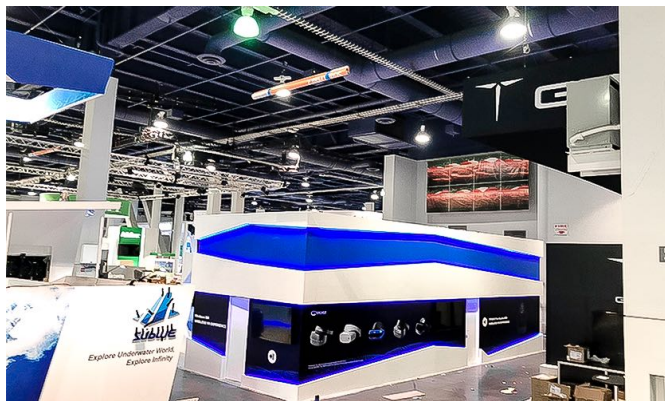
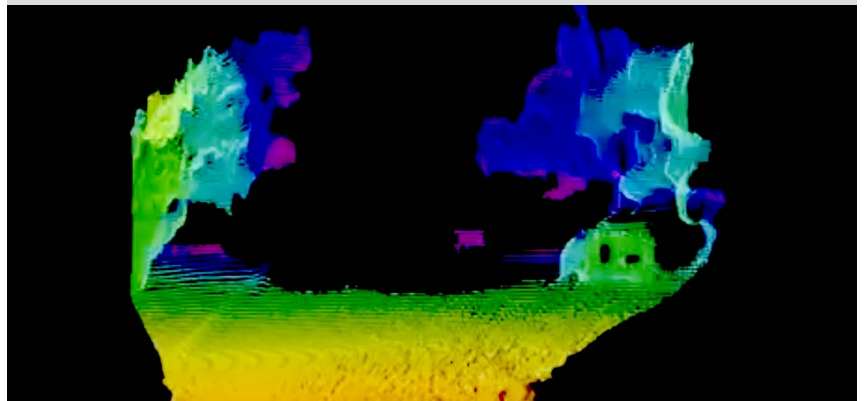
■ Modularity In Design

PARAMETERS	VALUE	COMMENTS
Environmental		
Ingress protection	IP67	
Operating temperature	-10°-+50°	
Storage temperature	-20°-+70°	
Cooling	Passive (Active Optional)	
Interfaces		
Data interface	Gigabit Ethernet	
Power socket	DC Jack	
Power Supply		
Power Supply	24V DC	
Power consumption	Mean 35W	
Certification		
Eye safety	Class I, IEC-60825	

ToF ULTRA-UBA2



Model: **ULTRA-UBA1**



US Add: 3350 Scott blvd. Bldg 64 Santa Clara 95054

CN Add: 859 Shixiang West Rd. Building B, Floor 13 Hangzhou, Zhejiang 310030

Tel: +1 (850) 888 2513 +86 (571) 5627 0735



**GENIUS PROS**