

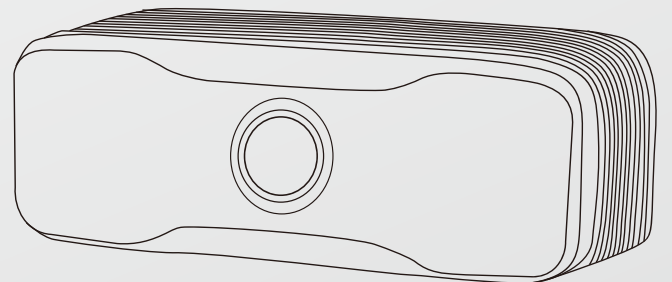


GENIUS PROS
DEPTH AND MORE

NEXT GENERATION SOLID-STATE LIDAR SENSOR

GENIUS **WIDE** - SERIES

THE **WIDER** THE SAFER



Information

PARAMETERS	VALUE	COMMENTS
Sensor		
Type of sensor	CCD	
Maximum frame rate	25 fps	
Pixel array size	500(h) x 60 (v)	
Multi camera option	Yes	
External light disturbance	Up to 20 kLux	
Illumination		
Illumination (power out)	Mean 0.8W	
Wave length	895~920nm	
Optics		
Field of view (h) x (v)	120°X40°	
Measurement range	0.3-4m	
Accuracy		
Absolute accuracy	±5cm average in the full range	
Reapeatable accuracy	2% average in the full range	
Processor,Memory And OS		
CPU for customer application	Quad-core ARM Cortex-A17 1.8GHz	
Memory	1G LPDDR III	
Free Flash storage	8G EMMC	
OS	Android 5.1	
Software		
Dirvers	Linux,Windows 7,8,10	
PC API	Open-NI 2.2	
Camera Internal API	Open-NI 2.2	
Data Output		
Response time	<100ms	
Distance data resolution	16bit/pixel 1mm	

Extra-large Field Angle

Support Built-in Algorithms To Output Structured Data

Industrial Design

High Depth Resolution

Ultra Wide Voltage

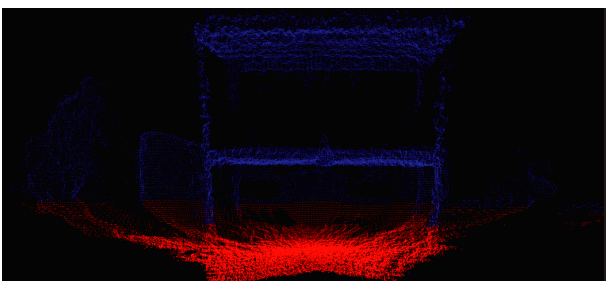
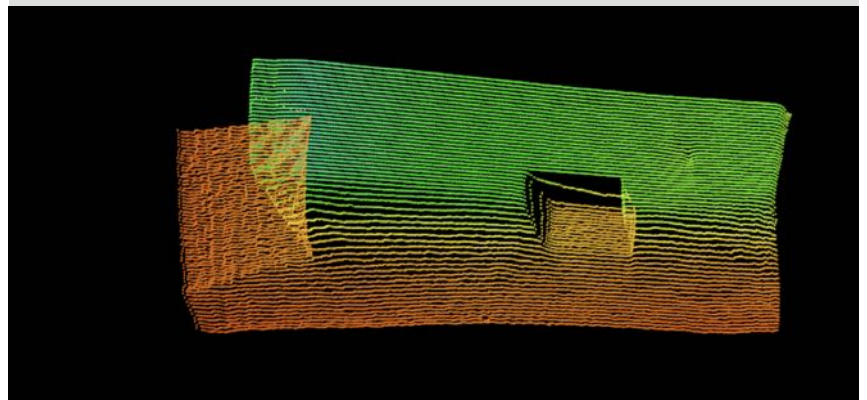
Modular Design, Flexible Customization

PARAMETERS	VALUE	COMMENTS
Housing		
Size [height x width x length]	65mm*68mm*185mm	
Weight	< 1.0KG	
Material	Aluminum	
- surface	Hard Anodized Aluminum	
- window	Gorilla glass	
Environmental		
Ingress protection	IP54	
Operating temperature	-10°-+50°	
Storage temperature	-20°-+70°	
Cooling	Passive (Active Optional)	
Shock and vibration	IEC60068-2-64, IEC68-2-27	
Interfaces		
Data interface	Megabit Ethernet	
Power socket	DC Jack	
Power Supply		
Power Supply	24V DC	
Power consumption	Mean 20W	
Certification		
Eye safety	Class1,IEC-60825	

ToF Sensor-GP001



Model: **WIDE-WAA1**



US Add: 3350 Scott blvd. Bldg 64 Santa Clara 95054

CN Add: 859 Shixiang West Rd. Building B, Floor 13 Hangzhou, Zhejiang 310030

Tel: +1 (850) 888 2513 +86 (571) 5627 0735



GENIUS PROS